

giggles

PURR PARADE EDITION



FREE PATTERN

XXXXXXXXXXXXXXXXXXXXXXXXXXXX

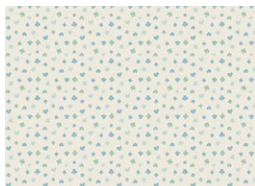


PURR PARADE

QUILT DESIGNED BY AGFstudio

giggles

FABRICS DESIGNED BY AGF STUDIO



Fabric A

PRP54205
ACES OF SUITS



Fabric B

PRP44202
FESTIVAL WONDERS



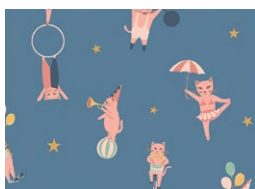
Fabric C

PRP54208
FESTIVAL DOTS



Fabric D

PRP54211
CIRCUS TOWN



Fabric E

PRP54200
PURRFECT PERFORMERS
COOL



Fabric F

PRP44207
WHISKER DECK



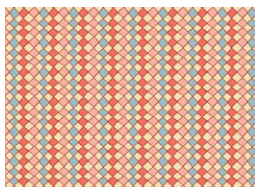
Fabric G

PRP44206
PURRFECTLY CLOWNISH
BLUSH



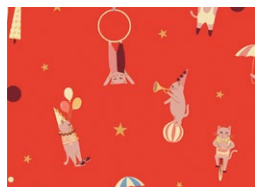
Fabric H

PRP44210
MEOW IN THE CLOUDS



Fabric I

PRP54201
HARLEQUIN YOY



Fabric J

PRP44200
PURRFECT PERFORMERS
WARM



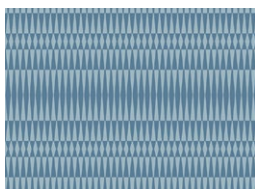
Fabric K

PRP54206
PURRFECTLY CLOWNISH
SUN



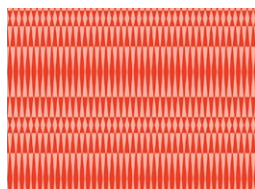
Fabric L

PRP54203
SKY CELEBRATION



Fabric M

PRP54209
CARNIVAL STRIPE SKY



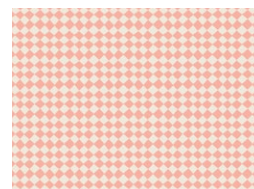
Fabric N

PRP44209
CARNIVAL STRIPE FLAME



Fabric O (Binding)

PE465
DENIM BLUE



Backing

PRP44201
HARLEQUIN SWEET



PURR PARADE EDITION

FINISHED SIZE | 60½" x 80½"

FABRIC REQUIREMENTS

Fabric A	PRP54205	3⅝ yd.
Fabric B	PRP44202	⅝ yd.
Fabric C	PRP54208	¾ yd.
Fabric D	PRP54211	⅝ yd.
Fabric E	PRP54200	⅝ yd.
Fabric F	PRP44207	⅝ yd.
Fabric G	PRP44206	⅝ yd.
Fabric H	PRP44210	⅝ yd.
Fabric I	PRP54201	⅝ yd.
Fabric J	PRP44200	⅝ yd.
Fabric K	PRP54206	⅝ yd.
Fabric L	PRP54203	⅝ yd.
Fabric M	PRP54209	½ yd.
Fabric N	PRP44209	½ yd.
Fabric O	PE465	¾ yd.

BACKING FABRIC
PRP44201 5 yds *(Suggested)*

BINDING FABRIC
Fabric O PE465 ¾ yd. *(Included)*

CUTTING DIRECTIONS

¼" seam allowances are included.
WOF means width of fabric.

Fabric A

- Cut 35 (thirty five) Template Rhombus.

Fabric B

- Cut 3 (three) Template Rhombus.

Fabric C

- Cut 2 (two) Template Rhombus.

Fabric D

- Cut 2 (two) Template Rhombus.

Fabric E

- Cut 3 (three) Template Rhombus

Fabric F

- Cut 2 (two) Template Rhombus.

Fabric G

- Cut 2 (two) Template Rhombus.

Fabric H

- Cut 2 (two) Template Rhombus.

Fabric I

- Cut 2 (two) Template Rhombus.

Fabric J

- Cut 2 (two) Template Rhombus.

Fabric K

- Cut 2 (two) Template Rhombus.

Fabric L

- Cut 2 (two) Template Rhombus.

Fabric M

- Cut 2 (two) $5\frac{1}{2}$ " x 32" strips.

Fabric N

- Cut 2 (two) $5\frac{1}{2}$ " x 32 strips.

Fabric O

- Cut 7 (seven) $2\frac{1}{2}$ " x WOF strips (Binding)

CONSTRUCTION

Sew all rights sides together with $\frac{1}{4}$ " seam allowance.

- Cut your rhombus template with the longer diagonal oriented vertically for all the fabrics except fabric **C**.

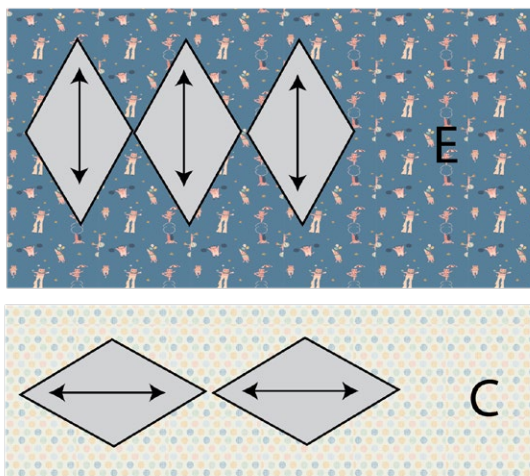


DIAGRAM 1

- Place 2 (two) rhombus right side together, leave $\frac{1}{4}$ " off on each end.

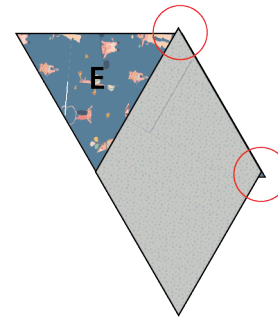


DIAGRAM 2

- Stitch at a $\frac{1}{4}$ " Seam Allowance.

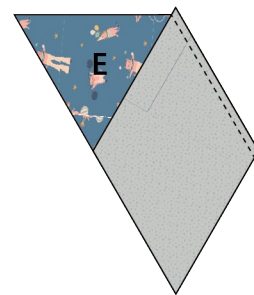


DIAGRAM 3

- Open seams and press flat.



DIAGRAM 4

- Sew the rhombuses together on rows following the order and direction on the diagram.

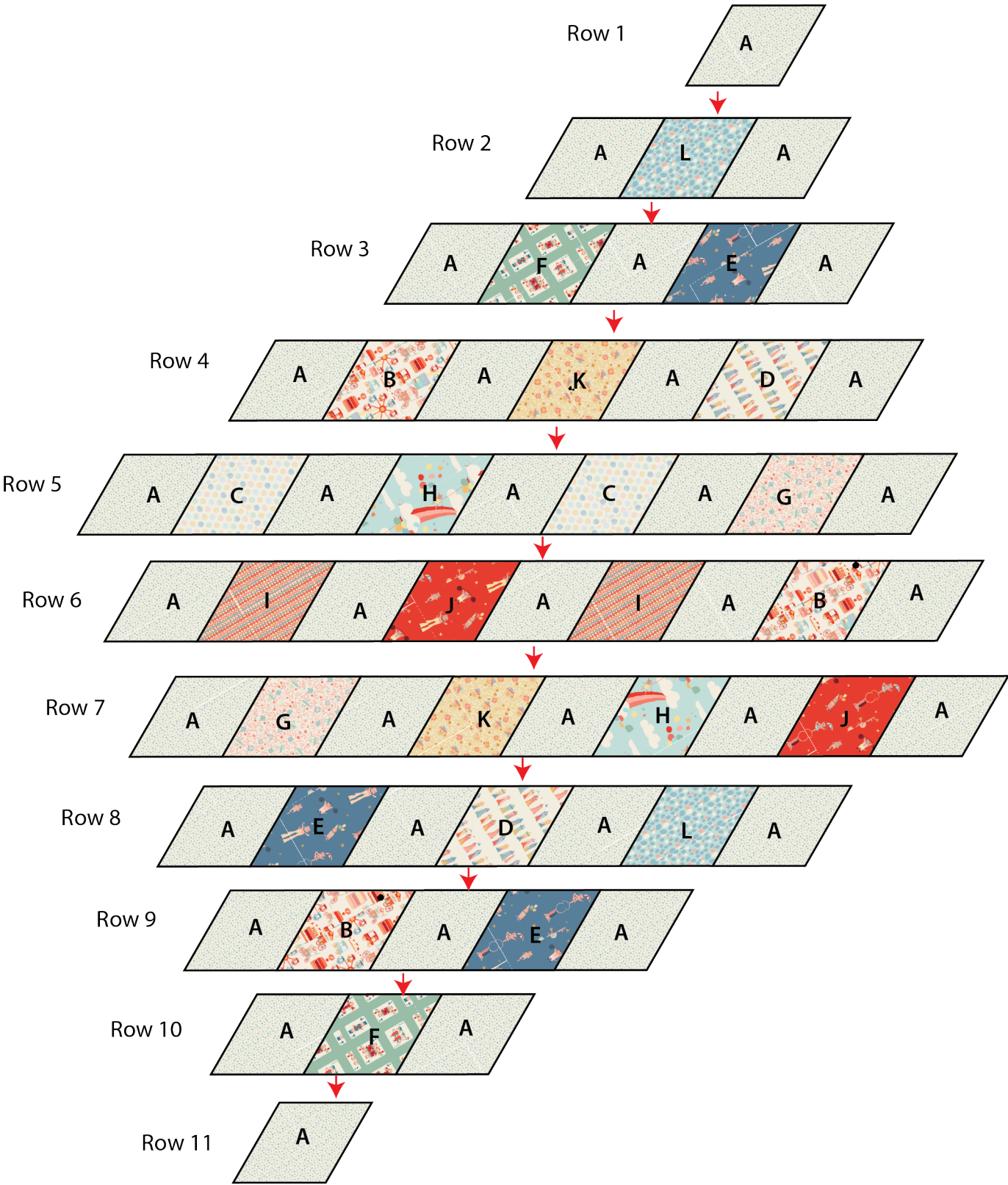


DIAGRAM 5

- Sew all the Rows together by centering every row on top of the next.

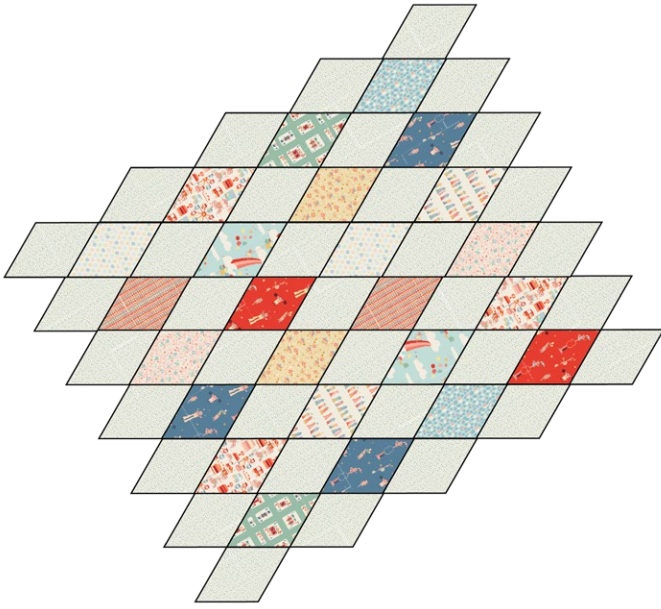


DIAGRAM 6

- Turn your quilt top vertically so that the Rhombus prints are facing straight, then trim around all four sides to measure $60\frac{1}{2}$ " x $70\frac{1}{2}$ ".

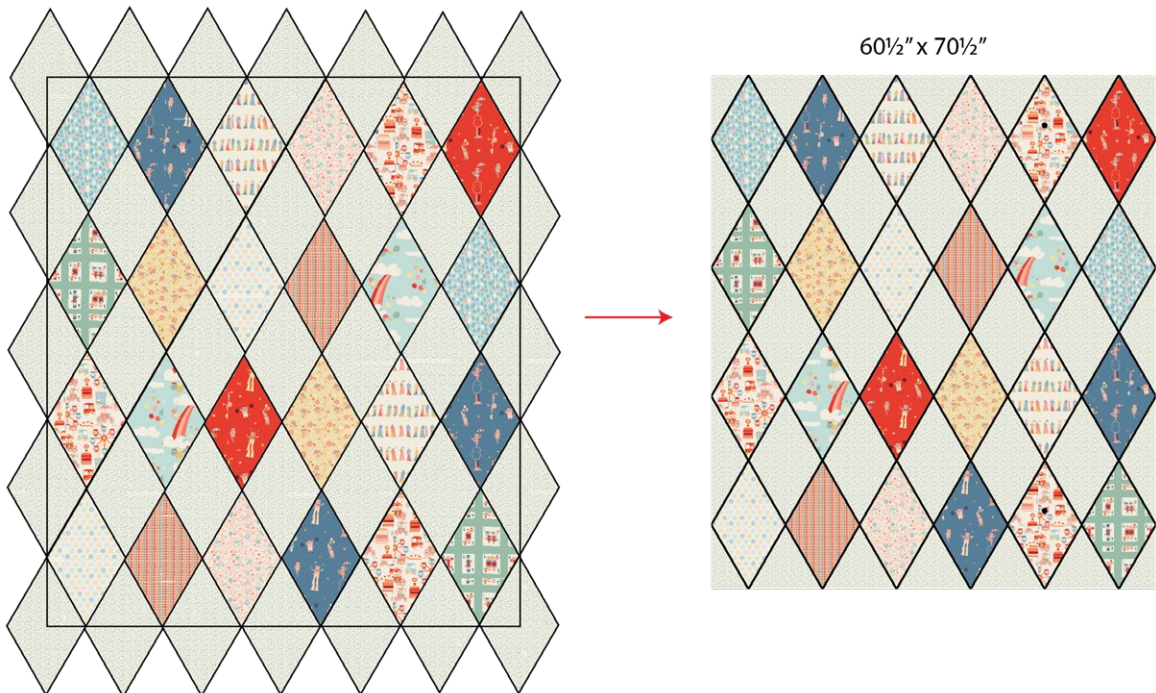


DIAGRAM 7

- Sew 2 (two) $5\frac{1}{2}$ " x 32" strips from fabric **M** and 2 (two) $5\frac{1}{2}$ " x 32" strips from fabric **N**.

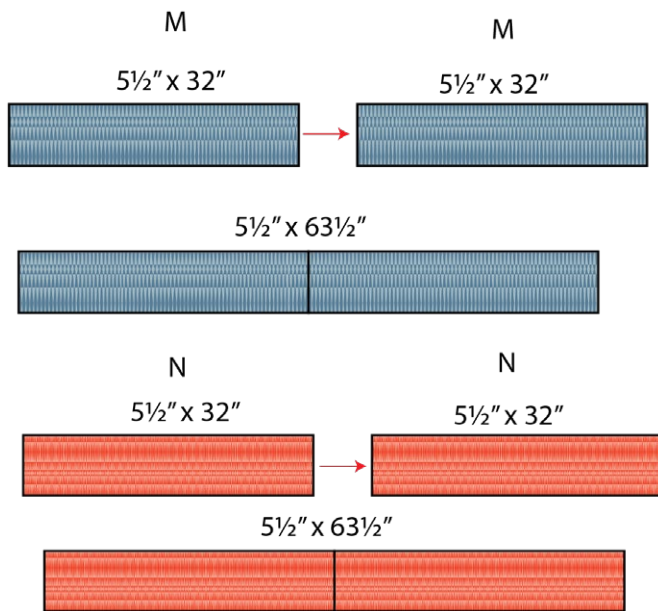


DIAGRAM 8

- Sew 1 (one) $5\frac{1}{2}$ " x $63\frac{1}{2}$ " strip from fabric **M** on top of the quilt top and 1 (one) $5\frac{1}{2}$ " x $63\frac{1}{2}$ " strip from fabric **N** on the bottom of the quilt top.
- Trim the excess.

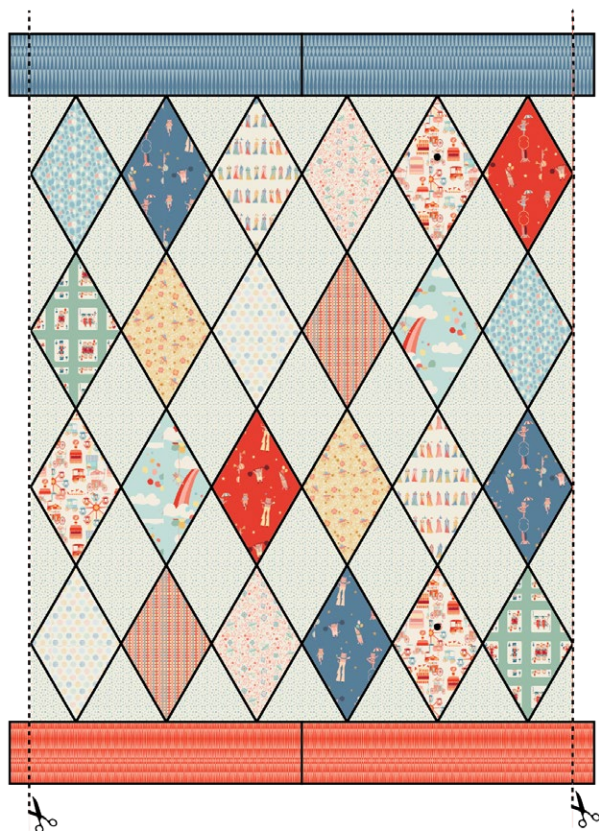


DIAGRAM 9

QUILT TOP

- Your quilt top is ready to bind.



DIAGRAM 10


QUILT ASSEMBLY

Sew rights sides together.

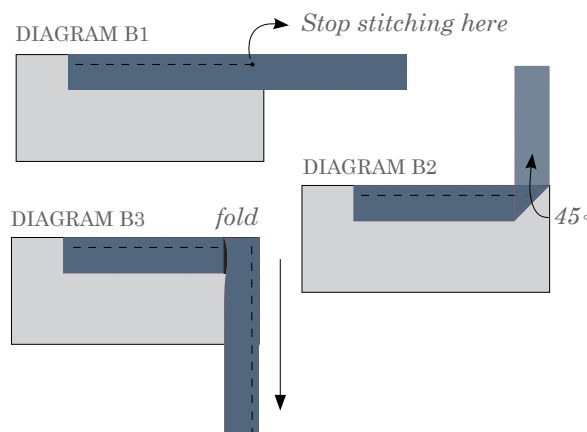
- Place BACKING FABRIC on a large surface wrong side up. Stretch it with masking tape against that surface.
- Place BATTING on top of backing fabric.
- Place TOP on top of the batting with right side facing up. Smooth away wrinkles using your hands.
- Pin all layers together and baste with basting thread, using long stitches. You can also use safety pins to join the layers.
- Machine or hand quilt starting at the center and working towards the corners. Remember that quilting motifs are a matter of personal preference. Have fun choosing yours!
- After you finished, trim excess of any fabric or batting, squaring the quilt to proceed to bind it.

BINDING

Sew rights sides together.

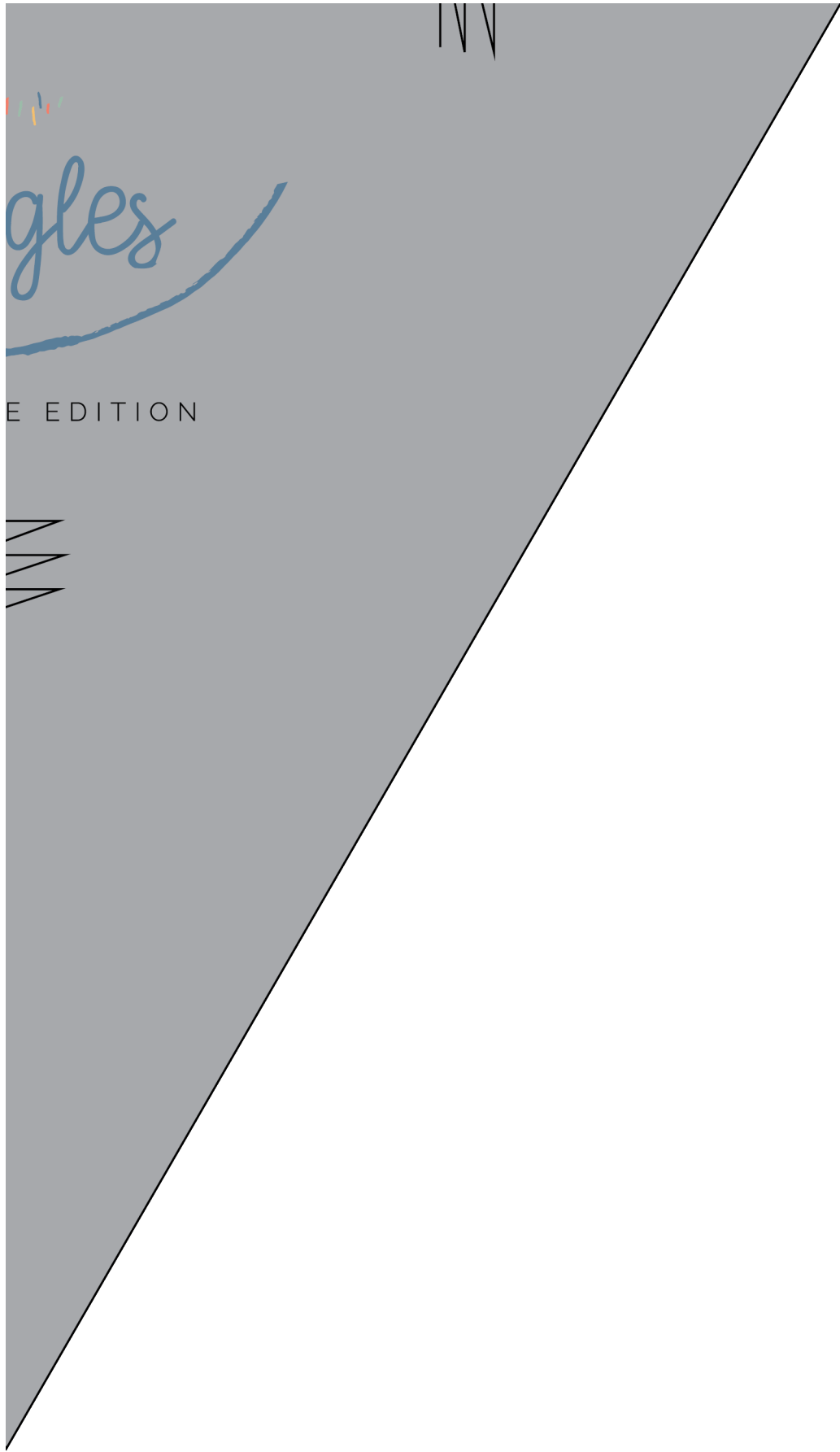
- Cut enough strips $2\frac{1}{2}$ " wide by the width of the fabric  to make a final strip 292" long. Start sewing the binding strip in the middle of one of the sides of the quilt, placing the strip right side down and leaving an approximated 5" tail. Sew with $\frac{1}{4}$ " seam allowance (using straight stitch), aligning the strip's raw edge with the quilt top's raw edge.
- Stop stitching $\frac{1}{4}$ " before the edge of the quilt (DIAGRAM B 1). Clip the threads. Remove the quilt from under the machine presser foot. Fold the strip in a motion of 45° and upward, pressing with your fingers (DIAGRAM B2). Hold this fold with your finger, bring the strip down in line with the next edge, making a horizontal fold that aligns with the top edge of the quilt (DIAGRAM B3). Start sewing at $\frac{1}{4}$ " of the border, stitching all the layers. Do the same in the four corners of the quilt.

- Stop stitching before you reach the last 5 or 6 inches. Cut the threads and remove the quilt from under the machine presser foot. Lay the loose ends of the binding flat along the quilt edge, folding the ends back on themselves where they meet. Press them together to form a crease. Using this crease as the stitching line, sew the two open ends of the binding with right sides together (you can help yourself marking with a pencil if the crease is difficult to see).
- Trim seam to $\frac{1}{4}$ " and press open. Complete the sewing. Turn binding to back of the quilt, turn raw edge inside and stitch by hand using blind stitch.
- If you are using our 2.5 edition (binding fabric), click or scan this QR code to see a tutorial on how to use this specialty fabric.



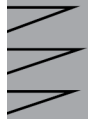
NNI

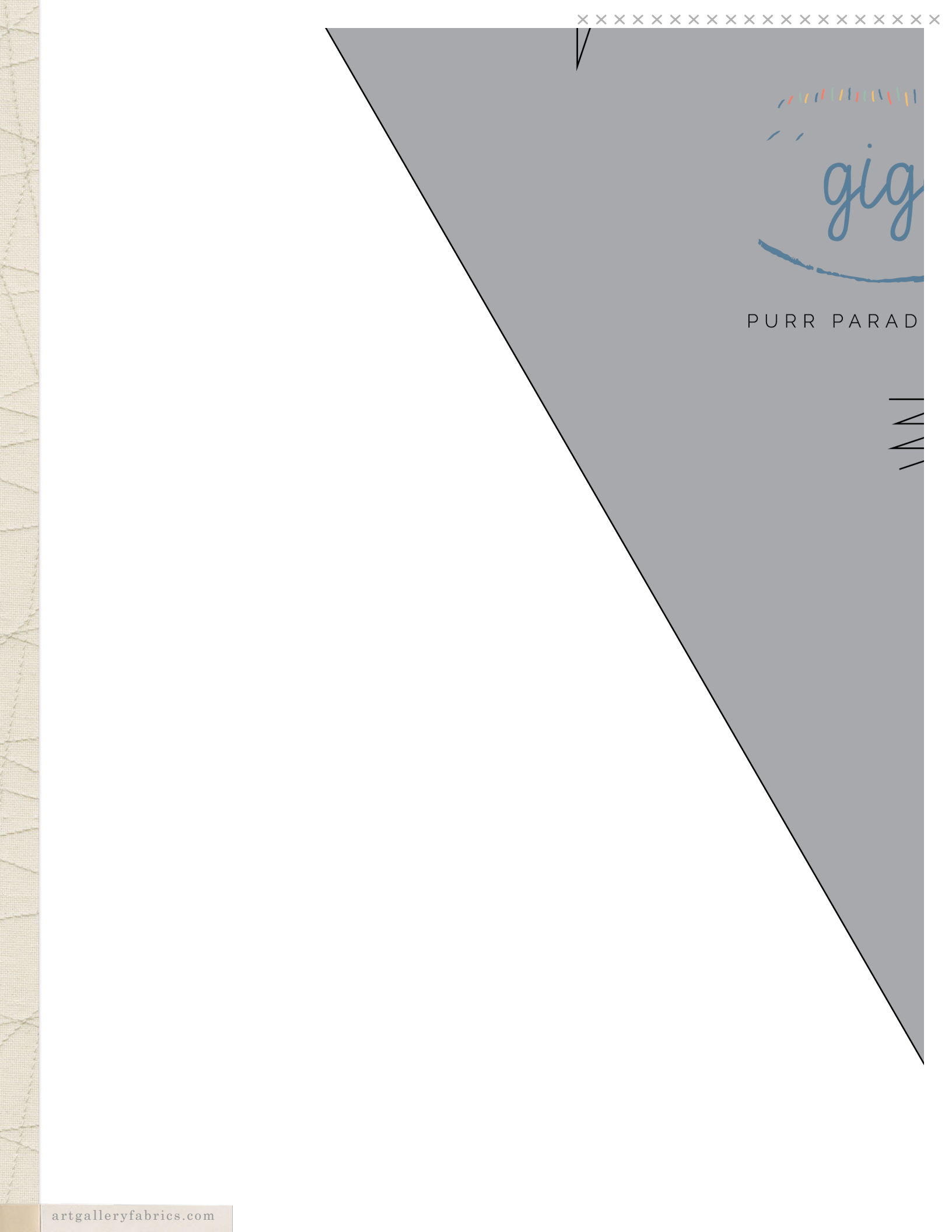
artgalleryfabrics.com

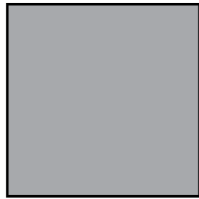


gles

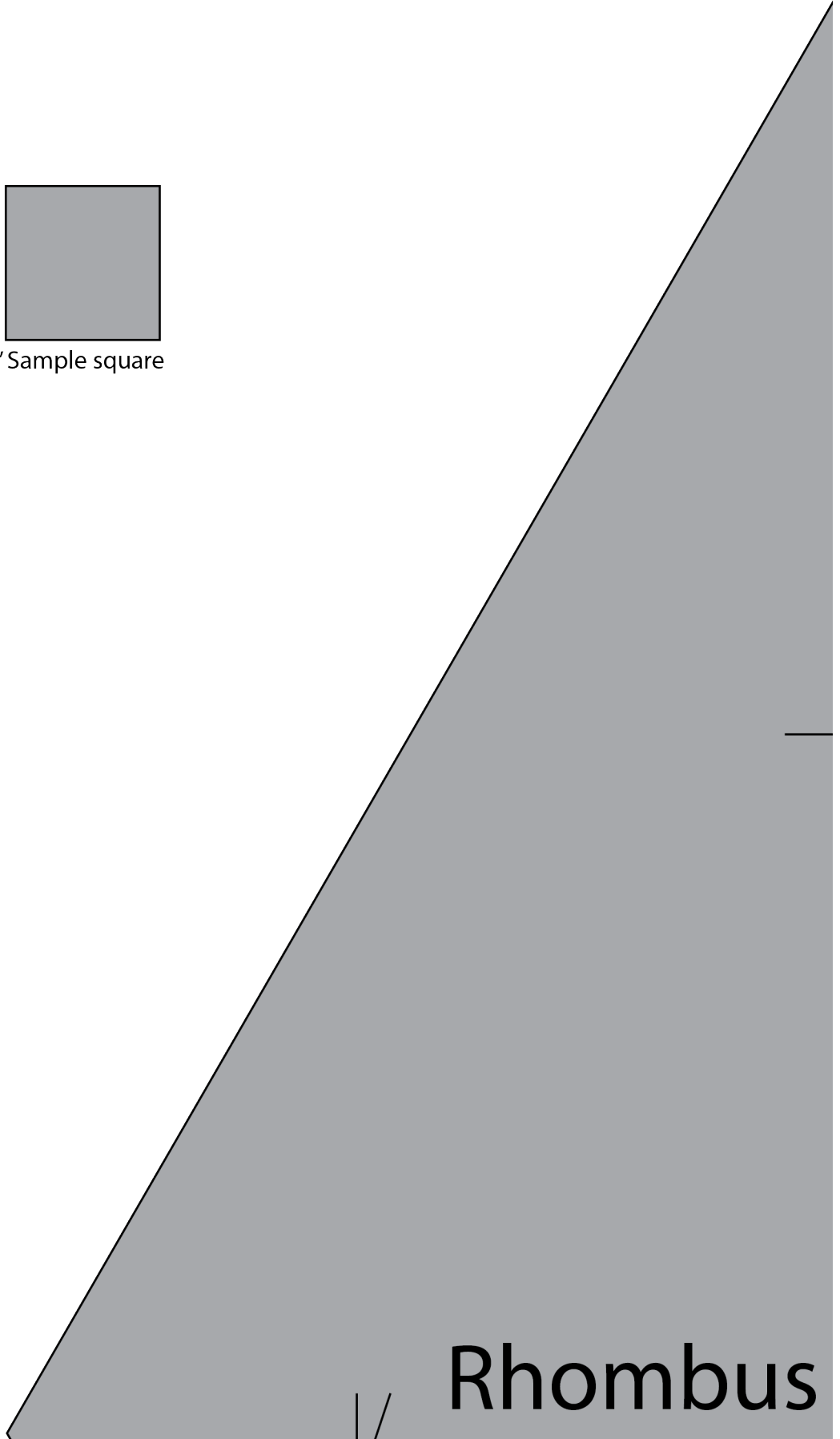
E EDITION







1" Sample square



Rhombus

XXXXXXXXXXXXXXXXXXXXXXXXXXXXXXXXXXXX

*Congratulations
& enjoy*

XXXXXXXXXXXXXXXXXXXXXXXXXXXXXXXXXXXX



artgalleryfabrics.com

NOTE: While all possible care has been taken to ensure the accuracy of this pattern, We are not responsible for printing errors or the way in which individual work varies.

Please read instructions carefully before starting the construction of this quilt. If desired, wash and iron your fabrics before starting to cut.

© 2025 Courtesy of Art Gallery Quilts LLC. All Rights Reserved.